

The Harper Freestanding Birth Pool

By Waterbirth Technologies, LLC

PO Box 650 • Wilsonville, OR 97070 • Tel: 503-673-0047 • Fax: 503-673-0029



It has been called "the Cadillac of Labor and Birth Pools." Available as a mobile or permanently installed unit, the *Harper Freestanding Birth Pool* can easily service a small birth center or a bustling city hospital. This sleek unit is convenient and efficient for staff as it provides access to the client from every angle. The mobile unit wheels from room to room with ease and is ready to use in minutes thanks to its quick-disconnect fill and drain hoses. Its sturdy yet lightweight aluminum frame is finished with KYDEX® - a lightweight, high-impact, fire-rated material which is

commonly used for high performance medical equipment. Hospitals, birth centers, and military bases all over the country have chosen to virtually eliminate their construction costs by purchasing this self-contained labor and birth pool.

Standard Features Include:

- 74" long, 44" wide, 33" high cabinetry
- Built-in access panels
- Acrylic tub in light color
- Interior grab bars – polished chrome
- Underwater lighting system - with push-button on/off switch
- Chrome fill spout with handle
- Chrome retractable hand-held shower
- Electric drain pump

Mobile Unit Features Also Include:

- 4 locking swivel wheels - high impact urethane rolling surface
- Quick-connect fill hose
- Quick-connect drain hose

Additional Available Options:

- Thermal Air System (permanent unit only)
- Microban Antibacterial Protection
- Extra pair of grab bars

Available External Colors:

- Buoyant Blue, Daybreak Rose, Beige & Vanilla.
- Many custom colors also available for an additional charge & production time.*



The Harper Freestanding Birth Pool

By Waterbirth Technologies, LLC • PO Box 650 • Wilsonville, OR 97070 • Tel: 503-673-0047 • Fax: 503-673-0029

Technical Specifications:

Dimensions and standard features are the same for both permanent and mobile unit.

Electrical Requirements:

Mobile unit – 20 amp 110 circuit (also available in 220 for Europe and Asia)

Permanent unit – (1) 20 amp 110 GFCI dedicated circuit

Permanent unit with Thermal Air System– (2) 20 amp 110 GFCI dedicated circuits

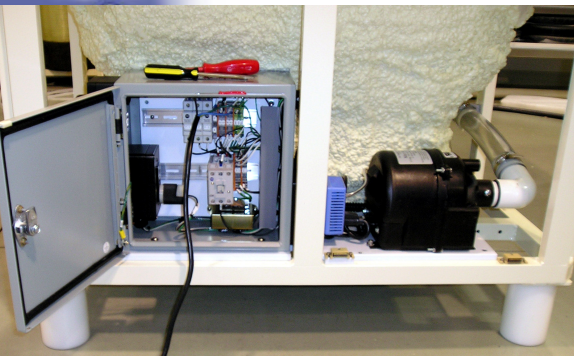
Plumbing Requirements:

Permanent unit - Hot and cold thermostatic mixing valve for installation behind wall or in 10-12" chase with access.

Additional Equipment:

Permanent unit - Requires a Thermostatic Control Valve with Trim Kit. Cost varies from \$600-\$1000 depending on style and manufacturer. We can supply several different styles from which to choose.

Mobile unit — Requires kit to adapt hook-ups to shower or in-room water source. (We usually do not supply this, as requirements vary by hospital.)



Measurements:

Length:	72.25 inches / 183.51 cm
Width:	42.50 inches / 107.95 cm
Height:	33.875 inches / 83.50 cm
Interior Depth:	24 inches / 60.96 cm
Interior Width:	25 inches / 63.50 cm
Interior Length:	50 inches / 127.0 cm

Capacity: Gallon capacity of bath is 95 gallons.

Drain Configuration: Drain is in the middle of the bath. Cable waste & overflow attached to side at top. Drain piping is 1" standard FNPT.

Filling: Hot and cold are brought into one 3/4" FNPT pipe.

Our design team looked at every bath tub and birth pool available for hospitals before creating the Harper Freestanding Birth Pool. Our two main goals were functionality for both mother and nursing staff, and design acceptance. The design fits in every birth room, looks like a part of the room, is familiar to the mother because it looks like a luxurious bathtub and is the same size as a birthing bed.

If your birth team wants to remodel bathrooms or build in a different unit, our designers are available for consultation. We have a selection of several other Birth Pools for drop-in installation that qualify as deep immersion baths for labor in water. We love to save hospitals money and get them the right equipment!

Let our 20 years of experience with water immersion in maternity care work for you!